

# Storage that's built to last.

MANUFACTURED WITH STATE-OF-THE ART WELDING SYSTEMS, OUR STEEL STORAGE TANKS MEET API 12F AND API 650 STANDARDS FOR THE STORAGE OF CRUDE PETROLEUM AND OTHER PRODUCTION LIQUIDS.

Included (API 12F, 13th edition specifications):

- 12 - 4" connections
- 1 - 6" connection
- 1- 8" thief hatch
- 1- 24" X 36" cleanout
- 4 walkway lugs, lift lugs
- Painted finish
- No interior coating

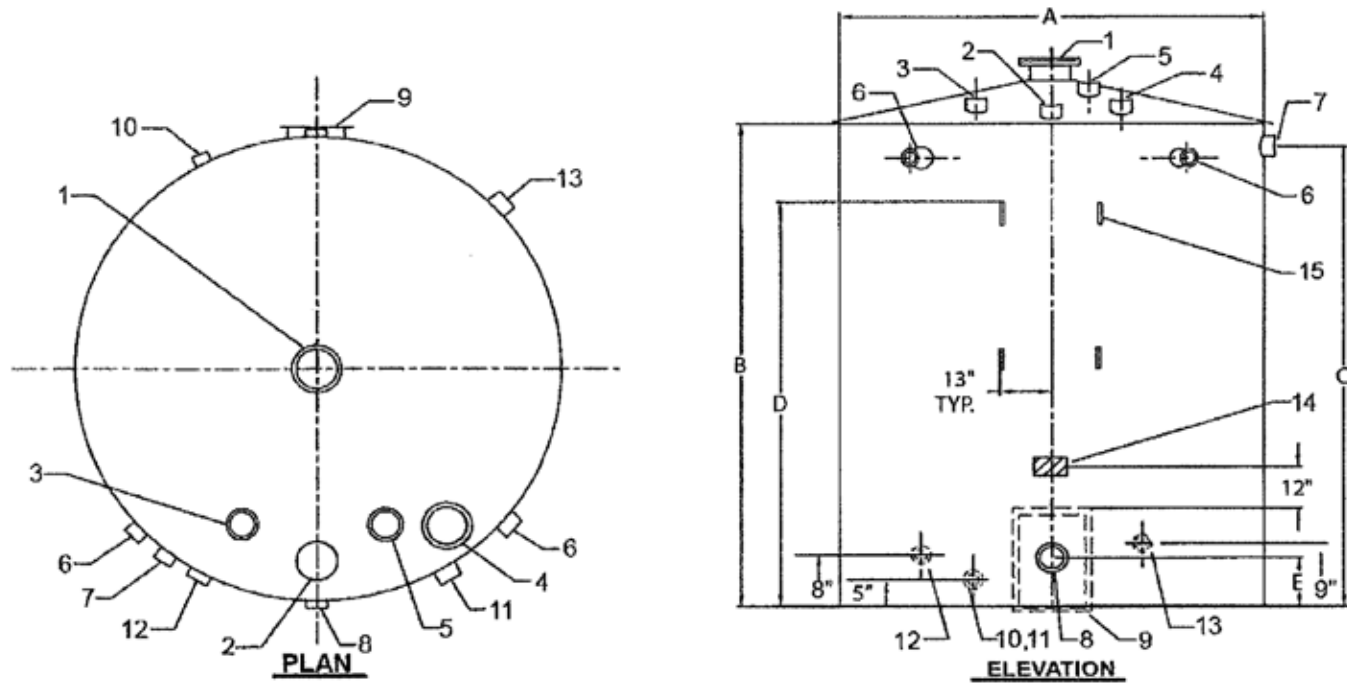
Options:

- Custom exterior paint colors
- Cone bottom (Type B-skirted or Type A-unskirted)
- Bottom asphalt coated
- Optional downcomer
- Optional EPRV connection
- Non API monogrammed tanks available in other sizes
- Extra fittings or different fitting schedule
- Stairway, walkway and landing
- Sandblast and interior coating



WESTERMAN





INSIDE DIAMETER (FT)	HEIGHT (FT)	NOMINAL CAPACITY (BBL)	APPROX. WORKING CAPACITY (BBL)
7.9	10	90	72
9.5	8	100	79
10	15	210	185
12	10	200	166
12	15	300	266
12	20	400	366
12	25	500	466